



# Queen & Parliament

Queen Street E and Parliament Street  
Toronto, ON

[oneproperties.com](https://oneproperties.com)





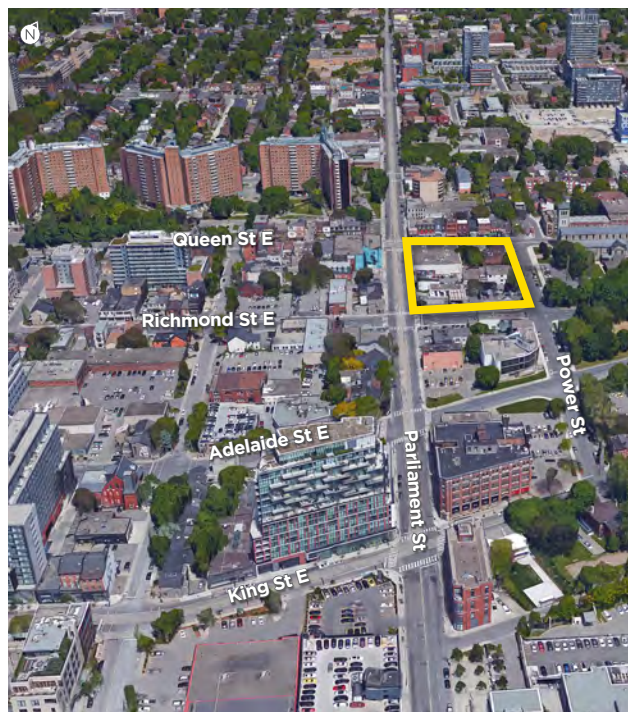
# Queen & Parliament

Queen Street E and Parliament Street, Toronto, ON



Located at the corner of Queen Street East and Parliament Street in Toronto's Corktown neighbourhood, this mixed-use development is just minutes away from the downtown core, waterfront, Entertainment District, Distillery District, and Garden District. The area attracts many young professionals to live in the neighbourhood because of its convenient location and close proximity to downtown Toronto's world-class shopping, dining, sports, entertainment, and more. This prominent intersection is home to Corktown's retail centre offering various services, restaurants, cafes, boutique and national retailers, and entertainment along Queen Street East. The Queen and Parliament intersection has been identified as the location of a Downtown Relief Line station.

Upon completion, the development will feature 659 residential suites (approx. 1,000 residents) above the 38,500 sq. ft. retail podium made up of 10,400 sq. ft. ground floor retail units and a 28,100 sq. ft. grocer on the second floor. The street-level retail units will face Queen Street E and Parliament Street for maximum exposure at this bustling corner.



## SIZE (NLA)

Total Retail.....	38,500 sq. ft.
Ground Floor.....	10,400 sq. ft.
Second Floor (Grocer).....	28,100 sq. ft.

## OPENING

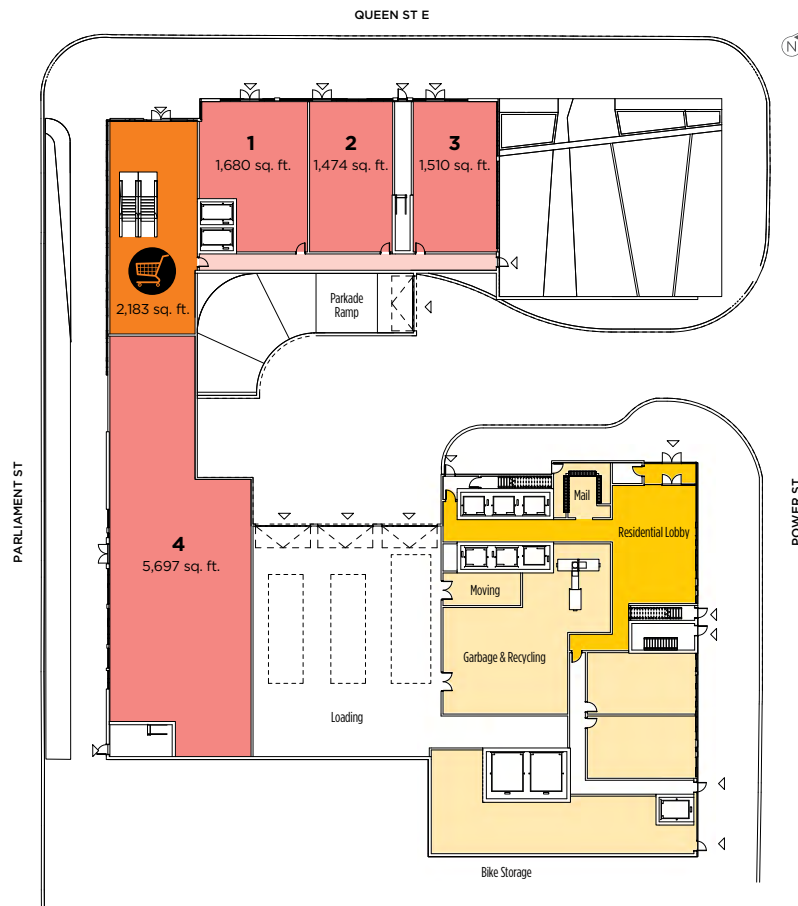
Construction.....	Future
Occupancies.....	Future

## TRADE AREA

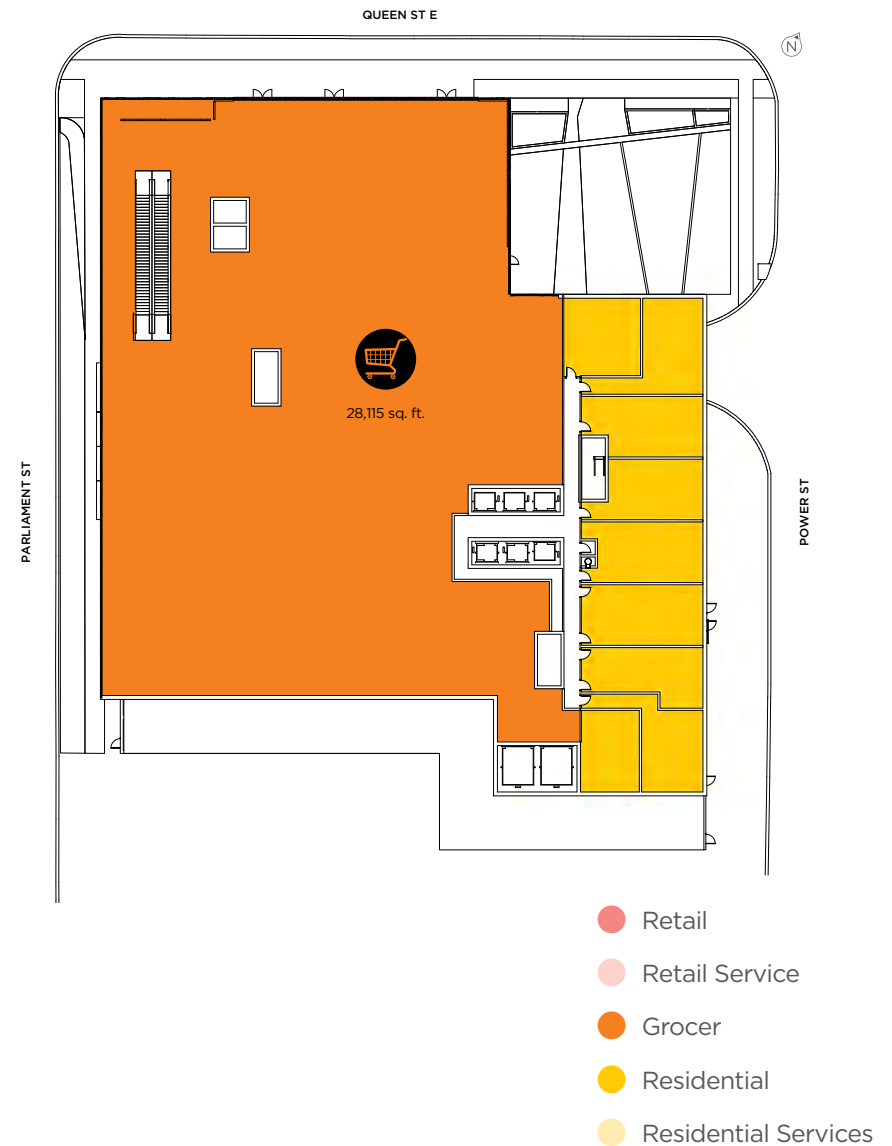
	2020 ESTIMATE	2025 PROJECTION	2030 PROJECTION
Within 400 m	11,677	12,646	14,025
Within 800 m	33,039	36,730	40,248
Within 1 km	51,299	57,979	64,477



## GROUND FLOOR



## SECOND FLOOR





# Queen & Parliament

*Queen Street E and Parliament Street, Toronto, ON*





## LEASING CONTACT

### **ROBERT MULVALE**

Vice President, Retail Leasing

**T** 647.256.1017    **C** 416.949.9112

**E** [rmulvale@oneproperties.com](mailto:rmulvale@oneproperties.com)

**[oneproperties.com](http://oneproperties.com)**